

**WARNING!**  
THE LOCATION OF EXISTING SERVICES SHOWN ON THESE PLANS MUST BE PROVEN ON SITE, THE APPROPRIATE AUTHORITY MUST BE CONTACTED AND THE SERVICES LOCATED PRIOR TO COMMENCEMENT OF ANY WORKS.



**NOTE:**  
ALL EXISTING TREES, VEGETATION, ALL BUILDINGS AND FENCES AFFECTING THE DEVELOPMENT ARE TO BE REMOVED AND DISPOSED OF BY THE CIVIL CONTRACTOR. REFER 11928.03EF01 FOR DETAILS.

**DANGER**  
OVERHEAD ELECTRICITY TRANSMISSION LINES. CONTRACTOR TO EXERCISE EXTREME CAUTION WHEN OPERATING IN THE VICINITY OF THESE LINES. THE CONTRACTOR MUST ADHERE TO ALL "NO GO ZONE" REQUIREMENTS OF THE POWER AUTHORITY.

**WARNING**  
NO DRAINAGE WORKS SHALL COMMENCE UNTIL THE CONTRACTOR CONFIRMS THE I.L. OF ALL EXISTING DRAINS, AND CONFIRMS IN WRITING WITH THE ENGINEERING SUPERVISOR.

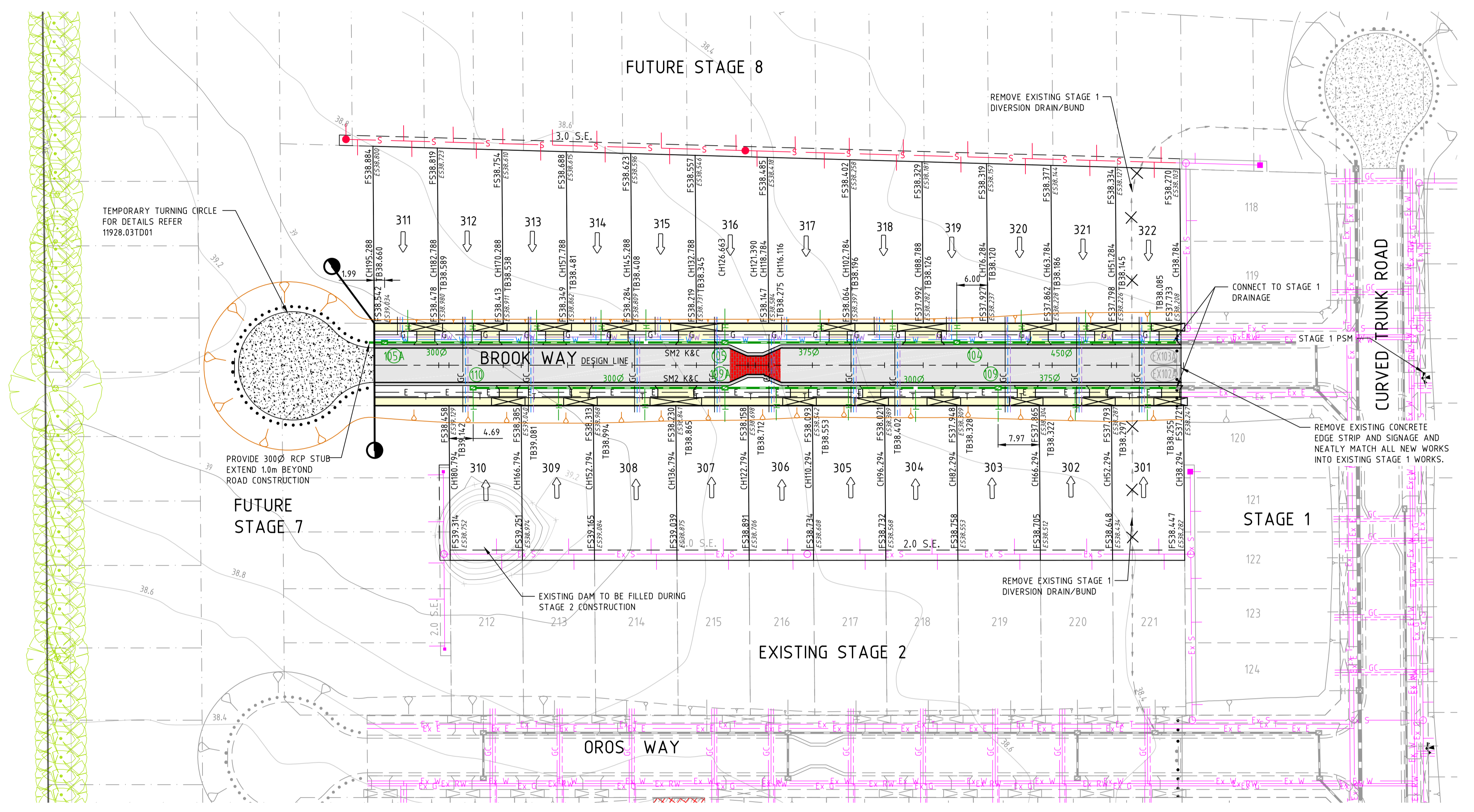


TABLE OF SERVICES LOCATIONS

STREET NAME	WATER	NO-WATER	GAS	NBN Co.	ELEC.	POLES	BOK
BROOK WAY	3.20 N	2.70 N	2.25 N	1.775 S	2.60 S	2.90 S	4.70 N 3.90 S

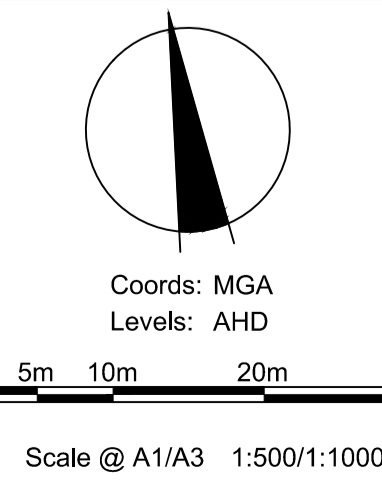
Drawing File: G:\Design\11928\11928.03-138\_Rix\_Road\_Beaconsfield\_Stage\_3\Acad\REV  
 11928.03DP01.dwg - 11928.03DP01  
 Date/Time: Fri Aug 28, 2015 - 2:27pm - jacob.burns

REV	DESCRIPTION	DATE	APP'D.
0	CONSTRUCTION ISSUE	28/08/15	TL
	AMENDMENTS		

Drawn HT Date 12/09/14  
 Designed PM  
 Date 08/09/12  
 AN 1421041  
 Verified TT  
 Date 15/11/14  
 AN 942021  
 Audited SL  
 Date 26/08/15  
 AN 1061909  
 Approved TL  
 Date 28/08/15  
 AN 884365  
 Written dimensions to take precedence over scale.  
 Contractor shall check and verify all dimensions on site.  
 Discrepancies to be brought to the attention of the Superintendent.

**LEGEND**

- Ex W — EXISTING WATER MAIN
- Ex G — EXISTING GAS MAIN
- Ex E — EXISTING ELECTRICAL CABLE
- Ex S — EXISTING SEWER MAIN & MANHOLE
- Ex T — EXISTING TELECOMM. CABLE AND PIT
- Ex V — EXISTING ELEC. POLE & O'HEAD LINES
- Ex P — EXISTING STORMWATER DRAIN & PIT
- Ex C — CONSTRUCTED PRE DEVELOPMENT
- Ex T — EXISTING TREES TO BE REMOVED
- 155.0 — FINISHED SURFACE CONTOUR
- ← REGRADE LOT AT MIN 1 IN 150
- S — SEWER MAIN AND MANHOLE
- M — MELBOURNE WATER DRAIN
- D — STORMWATER DRAIN & PIT
- I — PROPERTY INLETS
- H — HOUSE DRAIN
- GC — GAS CONDUIT
- W — WATER CONDUIT
- RW — RECYCLED WATER CONDUIT
- TC — TELECOMM. CONDUIT
- E520.06 — EXISTING SURFACE LEVEL
- F521.650 — FINISHED SURFACE LEVEL
- O — OPEN EARTH DRAIN (O.E.D.)
- OF — OPTIC FIBRE
- W — WATER
- RW — RECYCLED WATER
- T — TELECOMMUNICATIONS
- E — ELECTRICITY
- G — GAS
- ASP — ASPHALT PAVEMENT
- CON — CONC FOOTPATH / DRIVEWAY
- TH — THRESHOLD TREATMENT
- L — LIMIT OF WORKS



**BANRIAR INVESTMENTS PTY LTD**  
**BEAONSFIELD LAVENDER ESTATE - STAGE 3**  
**138 RIX ROAD, BEAONSFIELD**  
**DETAIL PLAN**

Drawing No. 11928.03DP01 Rev 0  
 Sheet No. 03 CONSTRUCTION  
 © Dalton Consulting Engineers Pty Ltd  
 ABN 78 429 221 049

**DCE**  
 dalton consulting engineers

255 Whitehorse Road  
 PO Box 349  
 Balwyn Victoria 3103  
 Australia  
 T 61 3 8888 8888  
 F 61 3 8888 8880  
 W www.dceprofile.com

Suite 17  
 46 Douglas Street  
 PO Box 1178  
 Milton QLD 4084  
 Australia  
 T 61 7 3367 1732  
 E info@dceprofile.com